

DNA isolation from Plant Tissues

Application Procedure:

- **Sample type:** Tulip leaf, Tulip stem, tulip root, Basil leaf, Basil stem, Basil root.
- **Quantity:** 50mg each
- **Number of tubes:** 2 x 2mL tubes
- **Buffer:** Lysing buffer provided in MO BIO kit
- **Kit:** UltraClean® Plant DNA Isolation Kit

Desired End Result: Complete Homogenization of soft and tough plant samples



Bead Mill 24
(Catalog Number 15340163)

Omni Homogenizing Equipment:

- **Fisher Scientific Bead Mill 24:** Multi-Sample homogenizer setting: Different speed - 1 cycle of 3 min.
- **DNase / RNase Free Bead Tube:** 2.38mm Stainless Steel bead tubes

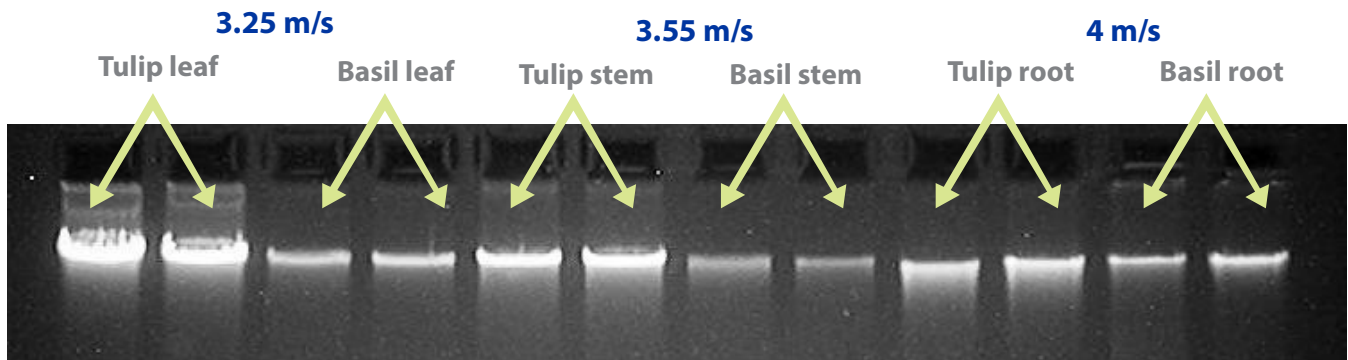


Figure 1 1% agarose gel with 17µl of each eluate loaded per lane

Conclusion

The Bead Mill 24 extracts consistently high quality DNA from various type of plant tissues.